

## Sirpa PCR genotyping

### Annealing T calculations

#### Input

Product Group:

Master Mix

Product:

OneTaq 2X Master Mix with Standard Buffer

Primer Conc. (nM):

400

Primer 1 Sequence:

TCCAGCCAAGGGAATATCTG

Primer 2 Sequence:

GCTCTAGGCTCCATCCCTCT

#### Results

Anneal Temp: 51 °C

Primer 1 Tm: 56 °C

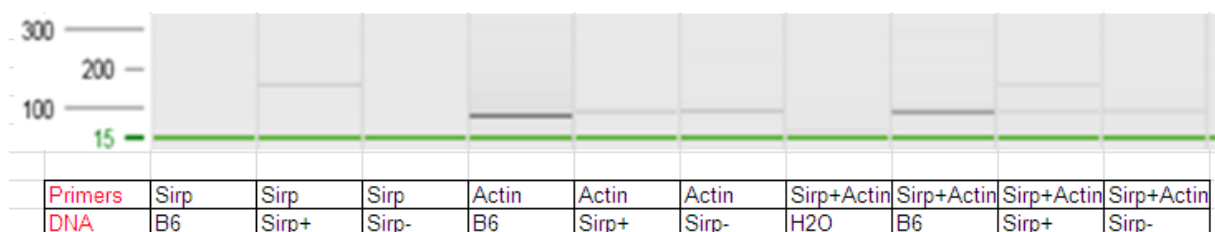
Primer 2 Tm: 60 °C

Note:

### Touchdown PCR program

Steps	°C	m:s	goto	loops	=cycles	$\Delta T(^{\circ}C)$	$\Delta t(s)$	$\nearrow(^{\circ}C/s)$
1	94.0	03:00						
2	94.0	00:30						
3	60.0	00:30				-1.0		
4	72.0	00:30	2	9	10			
5	94.0	00:30						
6	50.0	00:30						
7	72.0	00:30	5	24	25			
8	72.0	10:00						

### Results



### Bands size

Sirp+ 160bp

Actin 90bp